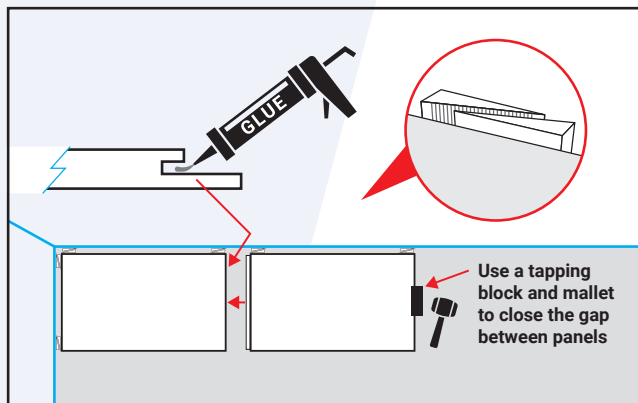
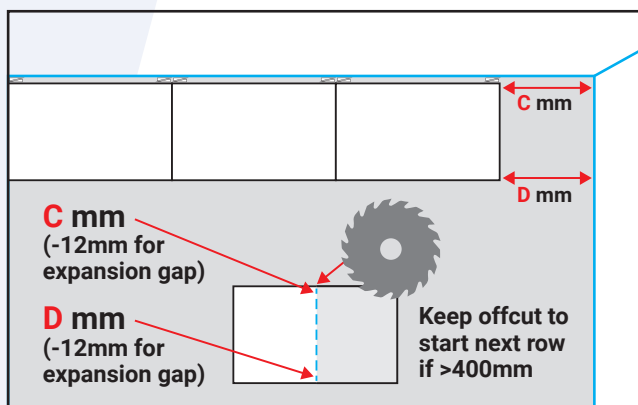


Now lay the second panel. First saw off the tongue and install the spacer batten to the underside of the edge that will be adjacent to the wall, as above. Apply glue into the groove on the short edge of panel 1. Slide panel 2 into place, remembering to place 12mm packers between the panel and the wall. It is very important that this panel lines up perfectly squarely with the first panel. If the fit is tight, use a tapping block and mallet to close the gap between the panels.



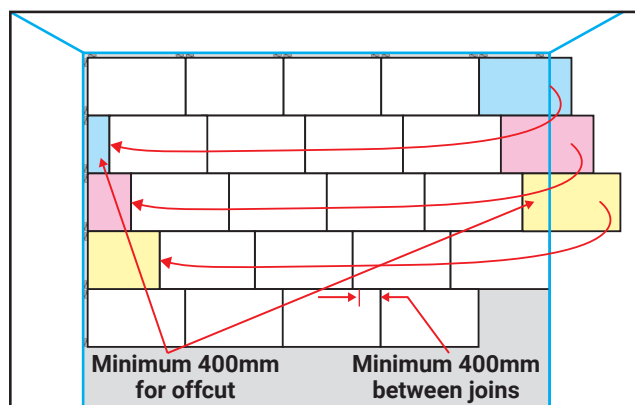
Continue laying panels in the first row as above.

Once you reach the end of the first row, measure from the panel to the wall from both corners of the panel. Remember to allow the 12mm expansion gap. Mark these measurements on the edges of a new panel and draw a line to join them. Carefully cut along this line with a saw. Remove the tongue off the edge adjacent to the wall with a saw and install the spacer batten to the underside of the edges that will be adjacent the walls.

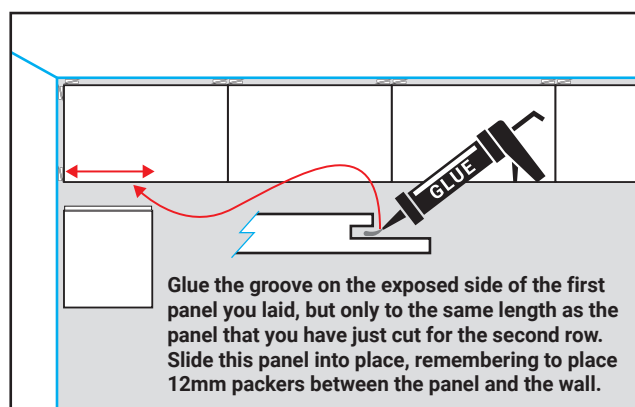


Apply glue to the short edge of the penultimate panel of the first row and place the last panel into position. A pull bar may be required to close the gap between the panels. Insert the 12mm packers to stop the panel moving.

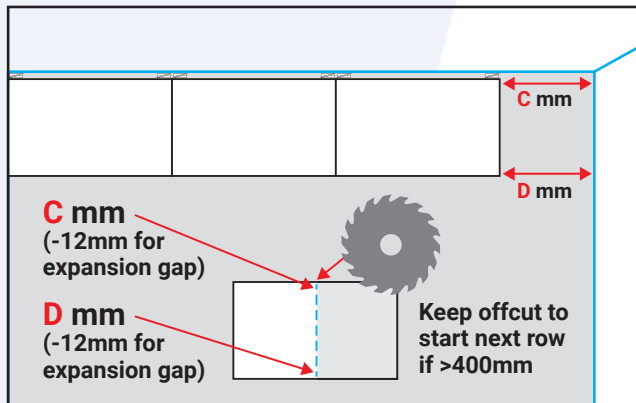
If the offcut of the last panel from the first row is 400mm or more in length use this to start the second row. If it isn't then a new panel will need to be cut to at least 400mm to start the next row. If your room is the same length as a row of panels then the second row should be started using a panel sawn in half. Ensure that all header joints are at least 400mm apart.



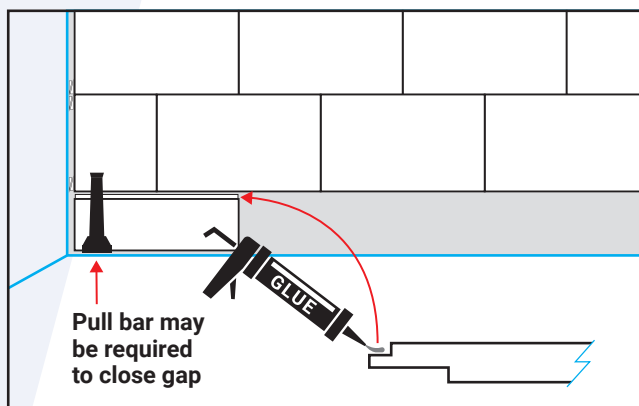
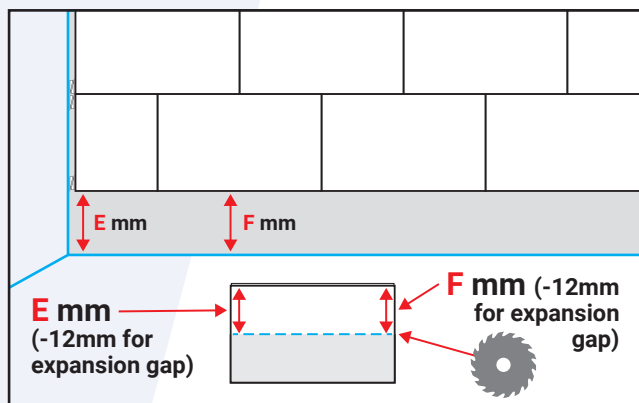
Glue the groove on the exposed side of the first panel you laid, but only to the same length as the panel that you have just cut for the second row. Slide this panel into place, remembering to place 12mm packers between the panel and the wall.



Continue in this way with rows of panels until you reach the other side of the room. It is important to maintain alignment.



When you get to the last row, measure from panel to wall at both corners of the panel. Mark these measurements onto a new panel (allowing for the 12mm expansion gap) and cut the panel lengthways. Apply adhesive to the long edge of the cut panel and slide it into position. A pull bar may be required to close the gap between the panels. Insert 12mm packers into the expansion gap.



Lay the remaining panels of the last row as above. Note that the final panel will probably need to be cut on two edges and will require 12mm packers between the panel and both walls.

Leave the packers in place until the glue has set, then remove them. The floor joints may require sanding to remove surplus glue before the top surface is laid.



Where panels need to fit around building features, such as pillars or radiator pipes, it will be necessary to place the panel and carefully mark the shape to be cut, including the required 12mm expansion gap. Cut out the shape using a saw and sandpaper the edges. This edge of the panel should be supported using the timber spacer battens.

D. Cleaning the floor

Before laying the Harlequin vinyl or wood top surface the sprung floor panels should be swept and vacuumed clean.

If you are using Harlequin vinyl please refer to the relevant installation guide, available at www.harlequinfloors.com/downloads



Harlequin recommend using a professional floor laying contractor for the permanent installation of a vinyl performance or wood top surface.

If you would like further information, advice and samples please contact us on +44(0) 1892 514 888 or enquiries@harlequinfloors.com



HARLEQUIN
www.harlequinfloors.com