



“Harlequin is an outstanding provider of dance specialist flooring”

“ Harlequin is an outstanding provider of dance specialist dance flooring. At Elmhurst, the health and well-being of our students is our priority and knowing that they are dancing on a research based product is extremely reassuring. ”

Robert Parker
Artistic Director
Elmhurst Ballet School

Harlequin Liberty HD sprung floor with a bespoke built trap was installed at Elmhurst Ballet School's newly refurbished studio with a Harlequin Cascade vinyl performance surface along with studio mirrors and wall mounted Harlequin ballet bars.


elmhurst
IN ASSOCIATION WITH BIRMINGHAM ROYAL BALLET

00 800 90 69 1000
info@harlequinfloors.com



HARLEQUIN
www.harlequinfloors.com

Harlequin Liberty[®] HD

Harlequin Liberty HD is a further development of our renowned Liberty panel system, designed with enhanced durability in mind, for more challenging environments. Installed permanently or as a portable floor, panels are laid in a brickwork fashion onto the sub-floor so that cross joins do not coincide. The panels join together by a rounded tongue and groove and are secured using our 'one turn of the key' latch and lock mechanism.

Harlequin Liberty HD panels are overlaid with a black polymer resin on both sides and have a textured, high grip pattern on the top surface, which is high wear resistant, anti-slip and weatherproof.

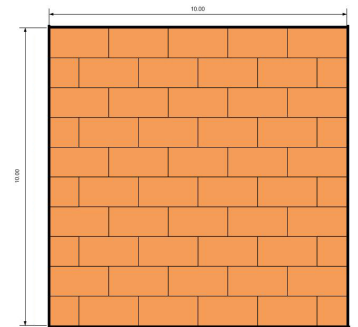
Harlequin Liberty HD panels can be finished by choosing an appropriate Harlequin vinyl performance floor from our range. For permanent and semi-permanent use, installation can be carried out either by the customer themselves or by our highly-skilled technical team.

Harlequin sprung floor panels and the accompanying portable Harlequin vinyl performance floor can also be stored in carts, providing an easy and safe way for stage crew to move them on tour or around a venue.

Specification guide

Permanent or Portable	Both
Floor panel sizes	1m x 1m & 2m x 1m
Minimum floor thickness (before inclusion of chosen finish)	37mm
Minimum floor weight (before inclusion of chosen finish)	12.5kg/m ²
Testing standards	BS EN 14904:2006
Average shock absorption	67%
Maximum point load (BS EN 1195)	1126kg
Area deflection	12.8%
Rolling load	>1500N
Vertical deformation	4.1mm

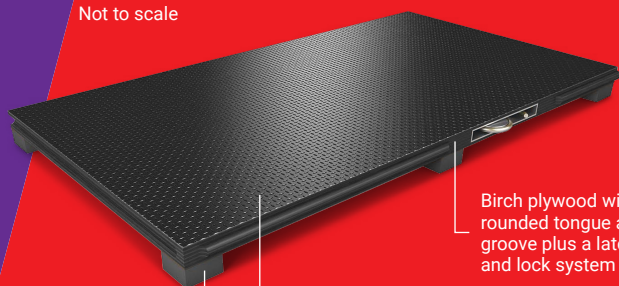
Diagram of 'brickwork fashion'



Harlequin's 'latch and lock' system



Not to scale

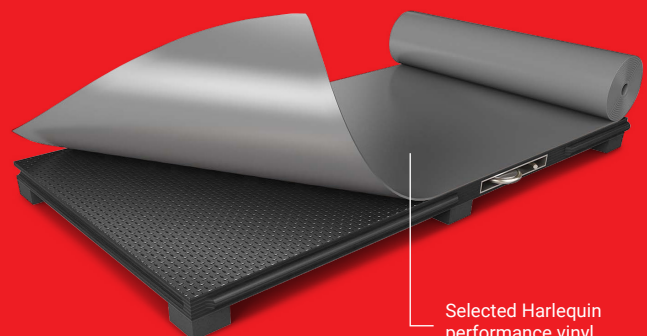


Birch plywood with a rounded tongue and groove plus a latch and lock system

A 220g black polymer resin on both sides of the plywood. The wear side has a textured, high grip pattern; the reverse side is smooth.

Dual density shock dampening elastomer pads at predetermined intervals. For portable panels, pads will have clear PVC protection.

Not to scale



Selected Harlequin performance vinyl

If you would like further information, advice and samples please contact us on +352 46 44 22 or info@harlequinfloors.com



HARLEQUIN
www.harlequinfloors.com