

# Harlequin Duo™

**Harlequin Duo** is the original double-sided performance floor. It's a lightweight calendared vinyl that rolls out quickly, lays flat and stays flat. It's hard-wearing and slip-resistant on both sides, providing two floors in one.

**Harlequin Duo** is suitable for ballet, contemporary, percussive dance (including flamenco, Irish and tap), hip-hop, jazz, street, aerobics, zumba, concerts, display, exhibitions, television, theatres and for operatic performances.

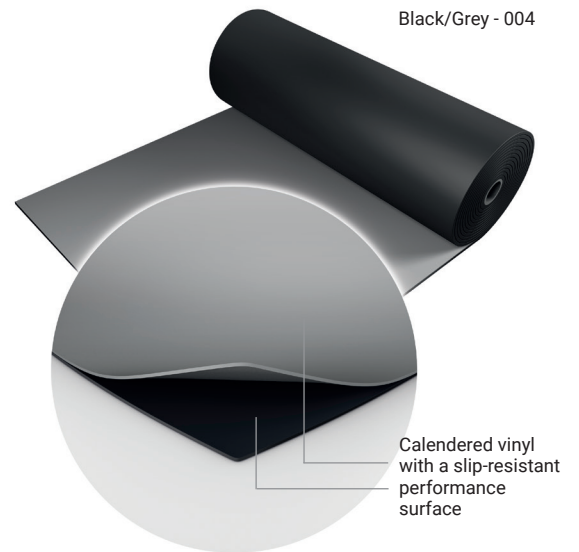
**Harlequin Duo** can be laid on to any hard, smooth surface and is particularly suited to touring due its to ease of handling and portability.

## Specification guide

<b>Permanent or Portable</b>	Portable
<b>Roll width</b>	2m
<b>Roll length</b>	10m, 15m, 18m, 20m, 25m
<b>Colours</b>	Black/Grey, Dark grey/Light grey, Black/White, Fog/Tan, Hazelnut/Beige, Red/Black, Chroma key green/Chroma key blue, Black/Projection grey
<b>Thickness</b>	1.3mm
<b>Weight</b>	1.6kg/m <sup>2</sup>
<b>Fire rating</b>	Bfl-s1 (EN 13501-1)



Black/Grey - 004



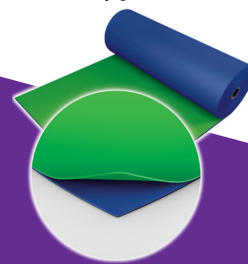
Dark grey/Light grey - 003



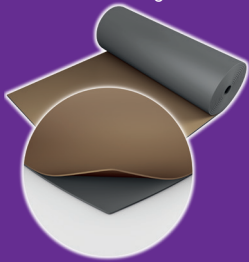
Black/White - 001



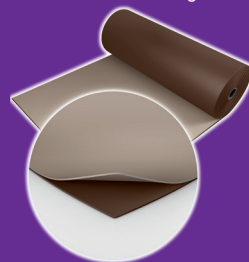
Chroma key green/Chroma key blue - 119



Fog/Tan - 890



Hazelnut/Beige - 310



Red/Black- 302



Black/Projection grey - 005



If you would like further information, advice and samples please contact us on +352 46 44 22 or [info@harlequinfloors.com](mailto:info@harlequinfloors.com)



**HARLEQUIN**  
[www.harlequinfloors.com](http://www.harlequinfloors.com)