

Harlequin Cascade™

Harlequin Cascade still delights generations of professional dancers, artistic directors and technical and stage managers as the ultimate heavy-duty dance floor. The silky smooth embossed surface that's often described as giving 'warmth' to a performance, also provides deceptively good grip, as well as a high-quality base for lighting designers.

Harlequin Cascade is ideal for ballet, contemporary, modern and theatrical use, as well as aerobics, zumba, hip-hop, jazz, street, salsa, percussive including flamenco, Irish and tap, multi-purpose use, concerts and for operatic performances.

Harlequin Cascade is specified for loose-lay or permanent installation within dance institutions, dance studios, schools and theatres and is an excellent choice as the vinyl dance surface in conjunction with a Harlequin sprung floor.

Specification guide

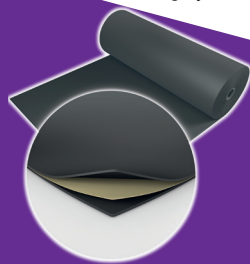
Permanent or Portable	Both
Roll width	2m
Roll length	10m, 15m, 18m, 20m, 25m
Colours	Black, Pale grey, Dark grey, Hazelnut, White
Thickness	2mm
Weight	2.6kg/m ²
Fire rating	Bfl-s1 (EN 13501-1)
Health and Safety	REACH compliant



Black - 501



Dark grey - 406



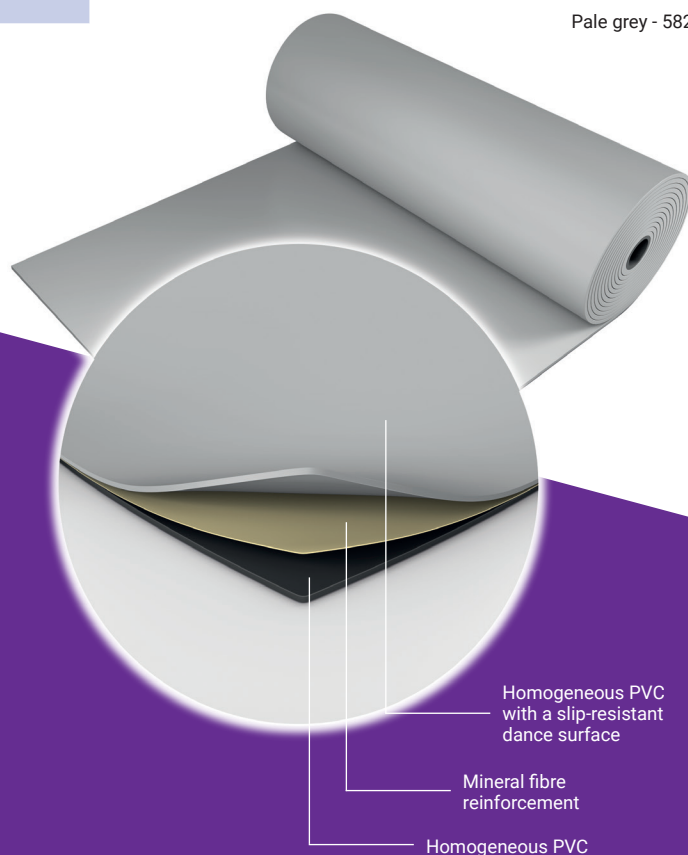
White - 100



Hazelnut - 470



Pale grey - 582



If you would like further information, advice and samples please contact us on +352 46 44 22 or info@harlequinfloors.com



HARLEQUIN
www.harlequinfloors.com