

Harlequin Duo™

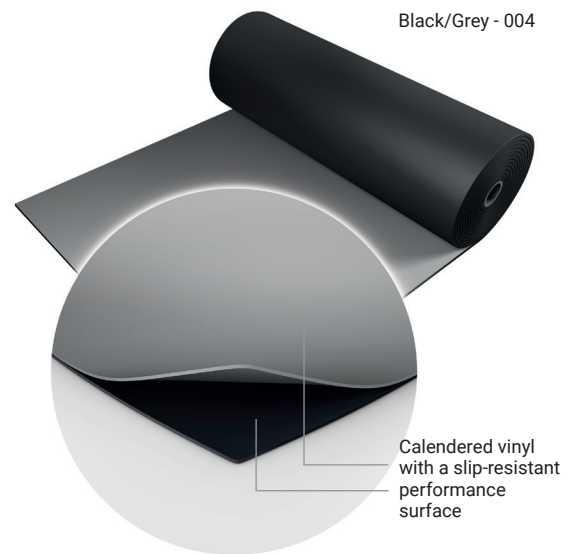
Harlequin Duo is the original double-sided performance floor. It's a lightweight calendared vinyl that rolls out quickly, lays flat and stays flat. It's hard-wearing and slip-resistant on both sides, providing two floors in one.

Harlequin Duo is suitable for ballet, contemporary, percussive dance (including flamenco, Irish and tap), hip-hop, jazz, street, aerobics, zumba, concerts, display, exhibitions, television, theatres and for operatic performances.

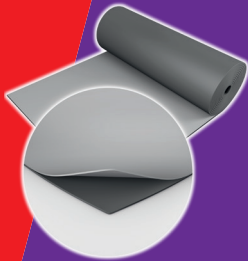
Harlequin Duo can be laid on to any hard, smooth surface and is particularly suited to touring due its to ease of handling and portability.

Specification guide

Permanent or Portable	Portable
Roll width	2m
Roll length	10m, 15m, 18m, 20m, 25m
Colours	Black/Grey, Dark grey/Light grey, Black/White, Fog/Tan, Hazelnut/Beige, Red/Black, Chroma key green/Chroma key blue, Black/Projection grey
Thickness	1.3mm
Weight	1.6kg/m ²
Dimensional stability	≤ 0,6%
Fire rating	Bfl-s1 (EN 13501-1)



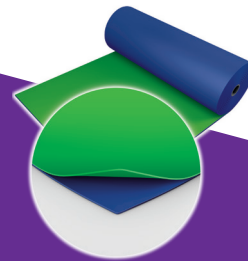
Dark grey/Light grey - 003



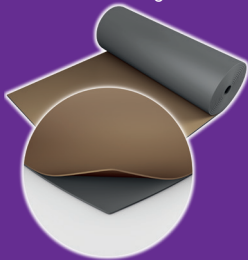
Black/White - 001



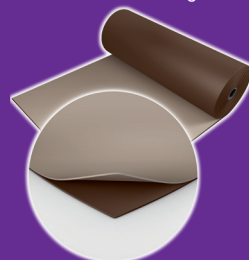
Chroma key green/Chroma key blue - 119



Fog/Tan - 890



Hazelnut/Beige - 310



Red/Black- 302



Black/Projection grey - 005



If you would like further information, advice and samples please contact us on +352 46 44 22 or info@harlequinfloors.com



HARLEQUIN
www.harlequinfloors.com