

# Harlequin Standfast™

**Harlequin Standfast** is a hard-wearing, durable performance floor that's intended for permanent installation into adhesive, when the joins are heat welded to form a continuous performance surface.

**Harlequin Standfast** is suitable for ballet, contemporary, modern, percussive dance including flamenco, Irish and tap, multi-purpose use, hip-hop, jazz, street, aerobics, zumba, television, theatre and for operatic performances.

**Harlequin Standfast** has a slip-resistant surface and is ideal as a permanent multi-purpose dance or stage flooring for heavy-duty use. It can be laid on any hard, smooth sub-floor and is an excellent choice as the vinyl performance surface in conjunction with a Harlequin sprung floor.

## Specification guide

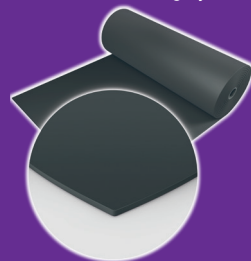
<b>Permanent or Portable</b>	Permanent
<b>Roll width</b>	1.5m
<b>Roll length</b>	10m, 15m, 20m
<b>Colours</b>	Black, Grey, Dark grey
<b>Thickness</b>	2.6mm
<b>Weight</b>	3.4kg/m <sup>2</sup>
<b>Fire rating</b>	Cfl-s1 (EN 13501-1)
<b>Health and Safety</b>	REACH compliant



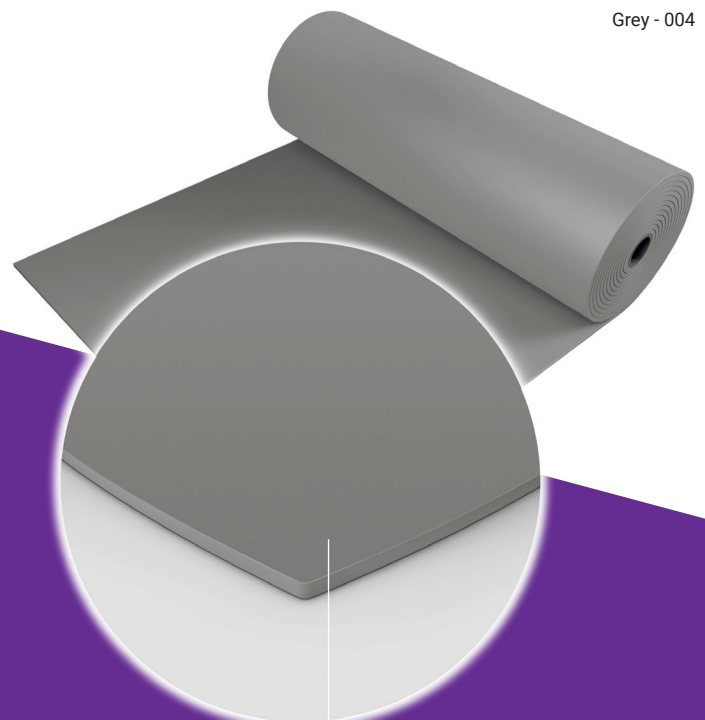
Black - 501



Dark grey - 406



Grey - 004



Homogeneous PVC with a slip-resistant performance surface

If you would like further information, advice and samples please contact us on +61 (2) 9620 7770 or [auscontact@harlequinfloors.com](mailto:auscontact@harlequinfloors.com)



**HARLEQUIN**  
[www.harlequinfloors.com](http://www.harlequinfloors.com)