

Harlequin Liberty HD™

Harlequin Liberty HD is a further development of our renowned Liberty panel system, designed with enhanced durability in mind, for more challenging environments. Installed permanently or as a portable floor, panels are laid in a brickwork fashion onto the sub-floor so that cross joints do not coincide. The panels join together by a rounded tongue and groove and are secured using our 'one turn of the key' latch and lock mechanism.

Harlequin Liberty HD panels are overlaid with a black polymer resin on both sides and have a textured, high grip pattern on the top surface, which is high wear resistant, anti-slip and weatherproof.

Harlequin Liberty HD panels can be finished by choosing an appropriate Harlequin vinyl performance floor from our range. For permanent and semi-permanent use, installation can be carried out either by the customer themselves or by our highly-skilled technical team.

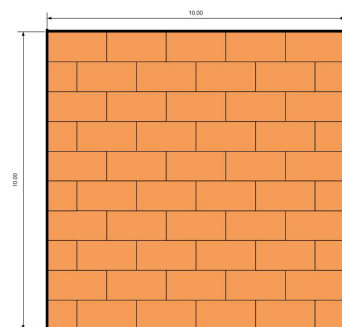
Harlequin sprung floor panels and the accompanying portable Harlequin vinyl performance floor can also be stored in carts, providing an easy and safe way for stage crew to move them on tour or around a venue.



Specification guide

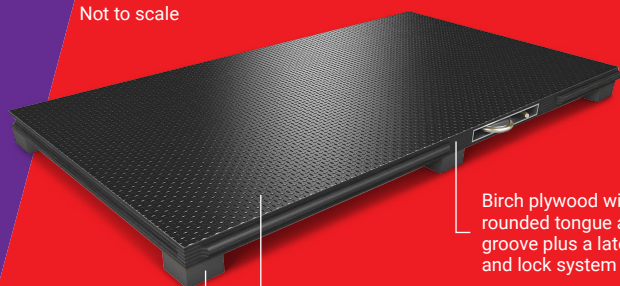
Permanent or Portable	Both
Floor panel sizes	1m x 1m & 2m x 1m
Minimum floor thickness (before inclusion of chosen finish)	37mm
Minimum floor weight (before inclusion of chosen finish)	12.5kg/m ²
Testing standards	BS EN 14904:2006
Average shock absorption	67%
Maximum point load (BS EN 1195)	1126kg
Area deflection	12.8%
Rolling load	>1500N
Vertical deformation	4.1mm

Diagram of 'brickwork fashion'



Harlequin's 'latch and lock' system

Not to scale

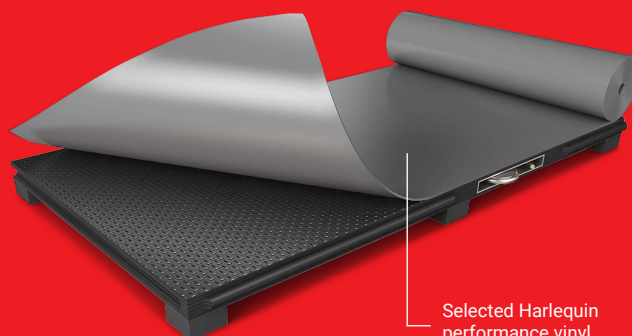


Birch plywood with a rounded tongue and groove plus a latch and lock system

A 220g black polymer resin on both sides of the plywood. The wear side has a textured, high grip pattern; the reverse side is smooth.

Dual density shock dampening elastomer pads at predetermined intervals. For portable panels, pads will have clear PVC protection.

Not to scale



Selected Harlequin performance vinyl

If you would like any further information, advice and samples please contact us on +61 (2) 9620 7770 or auscontact@harlequinfloors.com



HARLEQUIN
www.harlequinfloors.com