



HARLEQUIN
www.harlequinfloors.com

Harlequin's range of Performance Floors

Harlequin is the world leader in advanced technology flooring for
dance, performing arts, entertainment and display.



Harlequin's range of vinyl floors

Harlequin's range of vinyl floors can be used alone or as a dance surface on a sprung floor. They offer added assurance for better protection from injuries for dancers, providing them with a feeling of optimum safety.

Permanent - the vinyl floor is stuck down with adhesive with the seams sealed by hot or cold welding and cannot be removed without risking damage to the floor.

Semi-permanent - the vinyl floor is loose-laid using double-sided tape and then welded at the seams. The seams can later be cut and the vinyl floor taken up.

Portable - the vinyl floor is loose-laid, rolled out and the joins are either covered with tape or temporarily secured to the sub-floor with double-sided tape.

Application guide

	Aerobics/ Zumba	Ballet	Ballroom/ Salsa	Concerts	Contemporary	Display/ Exhibition	Hip-Hop/ Jazz/Street	Modern	Multi-purpose	Percussive* (Flamenco, Irish, Tap)	Theatre/ Opera	TV
Allegro	✓				✓		✓	✓				
Cascade	✓	✓		✓	✓		✓	✓	✓	✓	✓	
Clarity	✓	✓	✓	✓	✓	✓	✓	✓	✓	✓	✓	✓
Fiesta	✓		✓				✓	✓	✓	✓	✓	
FreeStyle	✓				✓		✓	✓				
Hi-Shine				✓	✓	✓					✓	✓
Marine				✓					✓	✓	✓	✓
Reversible	✓	✓		✓	✓	✓	✓	✓	✓	✓	✓	✓
Reversible Pro	✓	✓		✓	✓	✓	✓	✓	✓	✓	✓	✓
Showfloor				✓		✓						✓
Standfast	✓	✓			✓		✓	✓	✓	✓	✓	✓
Studio	✓	✓			✓		✓	✓				

Specification guide

	Permanent or Portable	Roll width (m)	Roll lengths (m)	Thickness (mm)	Weight (kg/m ²)	Standard colours	Fire rating
Allegro	Both	1.5	10, 15, 18, 20, 25	8.5	6	Black, Grey	Cfl-s1 (EN 13501-1)
Cascade	Both	2	10, 15, 18, 20, 25	2	2.6	Black, Light grey, Dark grey, Hazelnut, White	Bfl-s1 (EN 13501-1)
Clarity	Both	1.52, 2.13	15	2	2.47	Clear	Cfl-s1 (EN 13501-1)
Fiesta	Permanent	2	10, 15, 20, 25	2	3	Oak strip effect	Bfl-s1 (EN 13501-1)
FreeStyle	Both	1.5	15, 20, 25, 30	4.5	2.67	Black, Grey	Cfl-S1 (EN 13501-1)
Hi-Shine	Portable	1.5	10, 15, 20, 30	1.5	1.96	Black, White, Red, Blue, Grey, Gold, Silver	Bfl-s1 (EN 13501-1)
Marine	Permanent	2	23	2	3.35	Black	IMO FTP Code part 2 & 5
Reversible	Portable	2	10, 15, 18, 20, 25	1.3	1.6	Dark grey/Light grey, Black/ White, Black/Grey, Black/ Projection grey, Chroma key green/Blue, Fog/Tan, Hazelnut/ Beige, Black/Red	Bfl-s1 (EN 13501-1)
Reversible Pro	Portable	2	10, 15, 18, 20, 25, 30	1.5	2.25	Black/White, Black/Grey	Bfl-s1 (EN 13501-1)
Showfloor	Portable	2	10, 15, 20, 25, 30	2.6	1.7	Black, Grey, White, Red	Bfl-s1 (EN 13501-1)
Standfast	Permanent	1.5	10, 15, 20	2.6	3.4	Black, Grey, Dark grey	Cfl-s1 (EN 13501-1)
Studio	Both	1.5	10, 15, 18, 20, 25	3	2.3	Black, Grey, Dark grey, White	Bfl-s1 (EN 13501-1)

Harlequin Allegro™

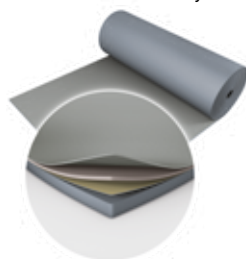
Harlequin Allegro is the thickest roll-out dance flooring available worldwide and provides protection for dancers due to its cushioning, point-elasticity and slip-resistant dance surface.

- Suitable for contemporary, modern, hip hop, jazz, street dance, aerobics and zumba
- Minimises impact injuries and performer fatigue
- Heavy duty floor
- For loose-lay or permanent installation

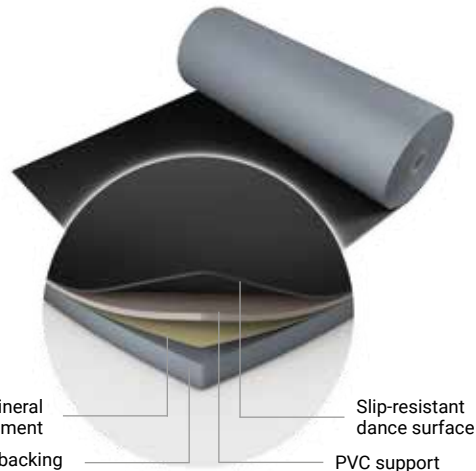


PERMANENT PORTABLE 1.5m

Grey - 880



Black - 180



Harlequin Cascade™ with BioCote® Antimicrobial Protection

Harlequin Cascade has delighted generations of professional dancers, artistic directors, technical directors and stage managers. The silky-smooth embossed surface provides excellent grip and is often described as giving 'warmth' to a dance performance.

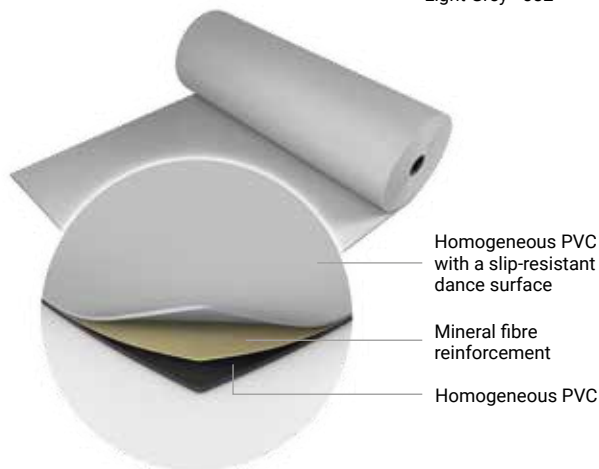
Harlequin Cascade now comes with BioCote® Antimicrobial Protection, an added ingredient that helps keep the floor hygienically clean, so reducing the risk of cross contamination by working constantly to reduce the presence of microbes on the surface of the flooring.

Harlequin Cascade is the ultimate heavy-duty vinyl dance floor, with mineral fibre reinforcement for stability and durability. It is widely used as a ballet floor but is also a popular choice for many other dance styles.



PERMANENT PORTABLE 2m

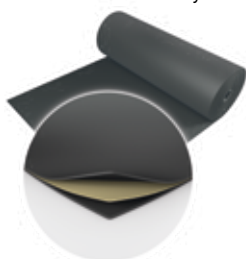
Light Grey - 582



Black - 501



Dark Grey - 406



White - 100



Hazelnut - 470



Harlequin Clarity™

Harlequin Clarity is a durable transparent vinyl performance floor specifically designed for reverse digital printing – the printed design is on the underside of the floor and so protected from wear and damage. Harlequin Clarity has an embossed texture and is suitable as a dance surface or for high traffic commercial use. Reverse printing is a two-stage process, the colour is printed first, then over printed with a white background.

- Suitable for contemporary, modern and theatrical use, aerobics, Zumba, hip-hop, jazz, street, percussive (including flamenco, Irish and tap), salsa and multi-purpose use
- Highest abrasion classification available
- Can be used as a clear protective wear layer which allows the floor underneath to show through
- Suitable for loose-lay or permanent installation.



PERMANENT PORTABLE 1.52m, 2.13m

Homogeneous PVC with a slip-resistant dance surface



Harlequin Fiesta™

Harlequin Fiesta was developed to meet the need for a floor which looked exactly like wood, but without all the associated problems of cleaning and maintenance. The floor's oak-strip performance surface provides the ideal solution.

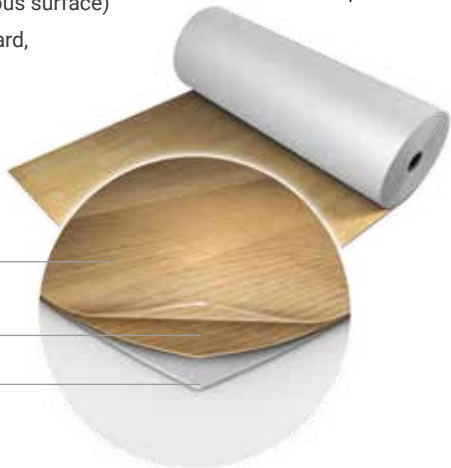
- Suitable for ballroom, salsa, percussive including flamenco, Irish and tap, multi-purpose use, hip-hop, jazz, street, aerobics, zumba and for use in theatres and for operatic performances
- For permanent installation (joints are welded to provide a continuous surface)
- Can be laid on any hard, smooth sub-floor



PERMANENT 2m

Clear PVC performance surface
Oak strip effect printed film
Stable impregnated polyester backing

Oak Strip Effect - 261

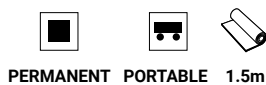


Harlequin FreeStyle™

Harlequin FreeStyle was specifically developed to meet the needs of hip-hop and street dancers who required a floor that provided less slip-resistance, enabling them to move freely yet safely.

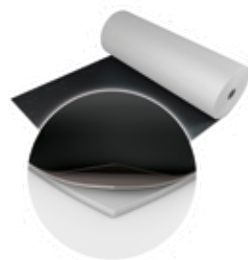
- Suitable for hip-hop, jazz, street dance, contemporary and modern dance, aerobics and zumba
- For loose-lay or permanent installation

Grey - 880



PERMANENT PORTABLE 1.5m

Black - 180



Slip-resistant dance surface

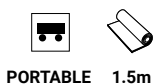
PVC support

Closed-cell foam backing

Harlequin Hi-Shine™

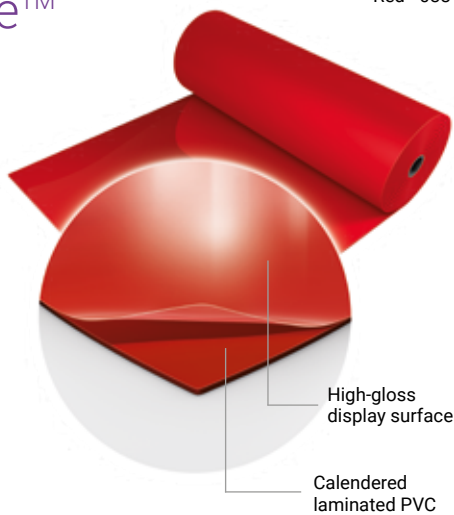
Harlequin Hi-Shine adds lustre to any occasion. Its special scratch-resistant high-gloss surface creates a brilliant shiny, reflective floor.

- Suitable for television, concerts, display and exhibitions, fashion shows, product launches, parties, window displays and a multitude of events, theatrical and operatic productions.
- For loose-lay installation.



PORTABLE 1.5m

Red - 038



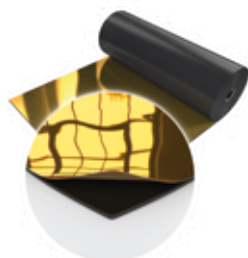
High-gloss display surface

Calendered laminated PVC

Black - 005

White - 019

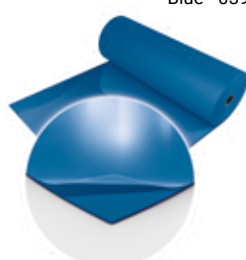
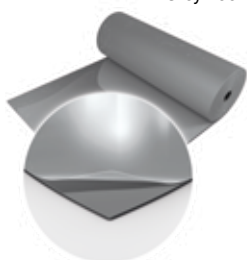
Gold - 050



Grey - 002

Blue - 039

Silver - 025



Harlequin Marine™

Harlequin Marine is extensively installed on cruise liners and conforms to International Maritime Organization (IMO) standards and fire ratings. It is a hard-wearing, homogeneous PVC dance floor with a slightly marbled surface to resist scuffing.

- Suitable for multi-purpose use, percussive dance including flamenco, Irish and tap, concerts, television, theatre and operatic performances. It can be laid on any hard, smooth sub-floor and is an excellent choice as the vinyl performance surface in conjunction with a Harlequin sprung floor.
- For permanent installation and suitable for fitting within confined spaces on maritime vessels.

Black - 501



PERMANENT 2m

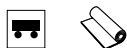


Homogeneous PVC with a fire resistant performance surface, which conforms to International Maritime Organization (IMO) standards

Harlequin Reversible™

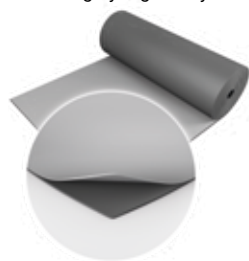
Harlequin Reversible is the original double-sided dance and stage floor. It is a lightweight calendered vinyl that rolls out quickly, lays flat and stays flat. It is hard-wearing and slip-resistant on both sides

- Suitable for ballet, contemporary, percussive dance including flamenco, Irish and tap, multi-purpose use, hip-hop, jazz, street, aerobics, modern, zumba, concerts, display, exhibitions, television, theatres and operatic performances
- A versatile loose-lay floor in a wide range of colour options, it can be laid on any hard, smooth surface and is ideally suited to touring with good ease of handling and portability.



PORTABLE 2m

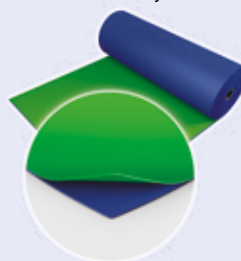
Dark grey/Light Grey - 003



Black/White - 001



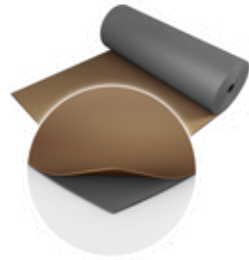
Chroma Key Green/Chroma Key Blue - 119



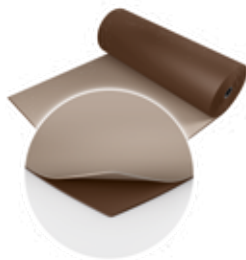
Red/Black - 302



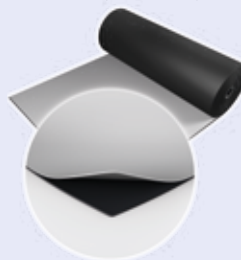
Fog/Tan - 890



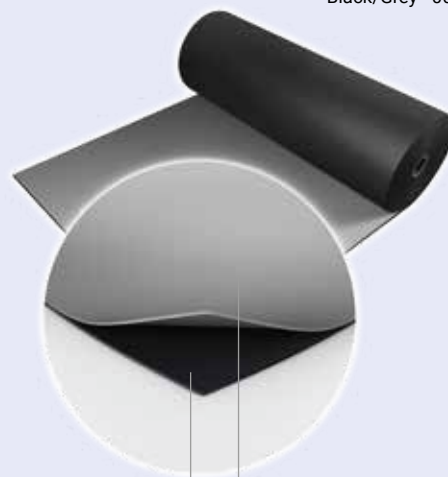
Hazelnut/Beige - 310



Black/Projection Grey - 005



Black/Grey - 004



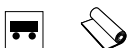
Calendered vinyl
with a slip-resistant
performance
surface

Harlequin Reversible Pro™

Harlequin Reversible Pro has the same features as Harlequin Reversible but with the addition of a new mineral fibre interply layer, it offers even more dimensional stability, making it an ideal surface for printing.

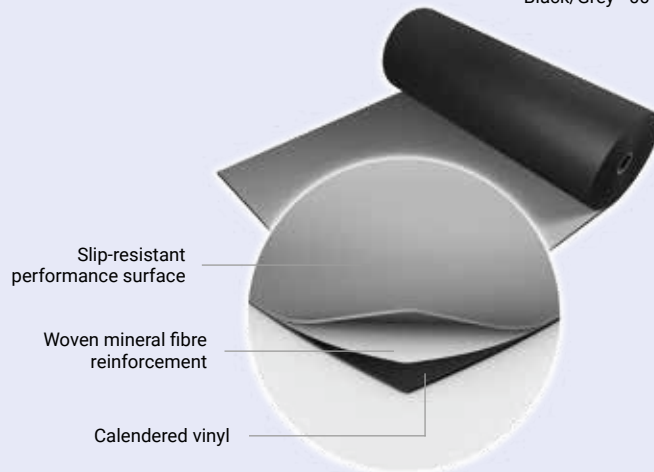
- Suitable for a wide variety of uses including ballet, modern, contemporary, percussive dance including flamenco, Irish and tap, multi-purpose use, hip-hop, jazz, street, aerobics, zumba, concerts, display, exhibitions, television, theatres and for operatic performances
- Highly portable and easy to handle
- Heavy duty Ideal for touring Quick to roll out Easy to lay flat

Black/White - 001



PORTABLE 2m

Black/Grey - 004



Harlequin Showfloor™

Harlequin Showfloor is perfect for use as a temporary floor that encounters light to medium 'traffic'. It can be laid on any hard, smooth surface including stage decking, wood, hardboard, terrazzo and concrete. It comes in a range of colours with an embossed display surface to help prevent scuff marks and its cellular foam backing provides comfort under foot and helps to reduce noise pollution.

- Suitable for use as a short life floor, ideal for fashion catwalks, exhibition stands, stage sets, events, shows and art displays.
- For loose-lay installation. Harlequin Showfloor is lightweight, lays flat quickly and stays flat.

Black - 021



PORTABLE 2m

An embossed clear wear display surface

Coloured printed film

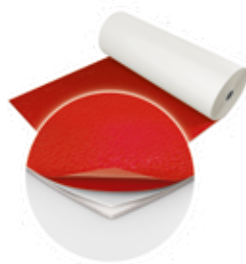
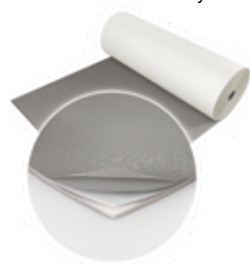
Mineral fibre reinforcement

Cellular foam backing

Grey - 034

White - 019

Red - 043

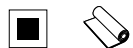


Harlequin Standfast™

Harlequin Standfast is a hard-wearing, durable performance floor that is intended for permanent installation using adhesive. The joins are heat welded to form a continuous performance surface.

- Suitable for ballet, contemporary, modern, percussive dance including flamenco, Irish and tap, multi-purpose use, hip-hop, jazz, street, aerobics, zumba, television, theatre and for operatic performances
- Permanent multi-purpose dance or stage flooring for heavy-duty use
- Can be laid on any hard, smooth sub-floor

Grey - 004

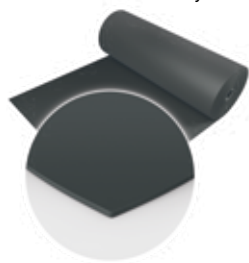


PERMANENT 1.5m

Homogeneous PVC with a slip-resistant performance surface

Black - 501

Dark Grey - 406



Harlequin Studio™

Harlequin Studio is a hard-wearing vinyl designed to meet the needs of dancers. The result is a slip-resistant floor that offers dancers added confidence for demanding choreography and movement.

- Suitable for aerobics, zumba, hip-hop, jazz, street, ballet, contemporary and modern dance
- Firm lightweight foam backing provides protection and is a great choice when touring
- For loose-lay or permanent installation



PERMANENT

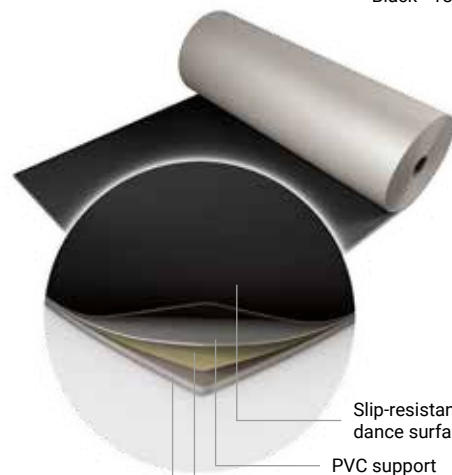


PORTABLE



1.5m

Black - 180



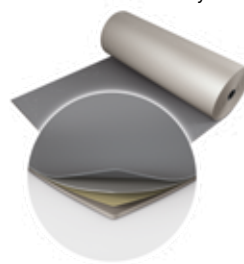
Slip-resistant dance surface

PVC support

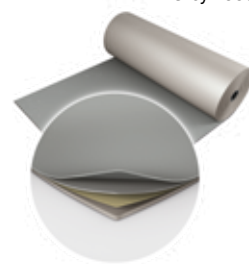
Woven mineral fibre reinforcement

Closed-cell foam backing

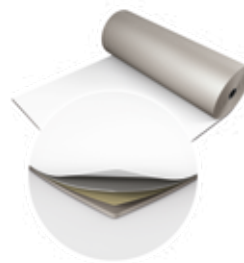
Dark Grey - 890



Grey - 880



White - 100



Harlequin Bespoke Printed Floors

Have you ever thought of having a totally unique floor for your event or display? Well now you can with Harlequin's vinyl printing service.

A printed finish is available on Harlequin Cascade or Harlequin Reversible Pro vinyl floors, and you can have a completely bespoke, a company logo or any image you desire.

Harlequin Clarity is specially formulated for reverse printing. The printed design is on the underside of the floor and so protected from wear and damage.

Whether you choose your company logo or have a particular design in mind, Harlequin's printing service will add an exciting new dimension to your Harlequin floor.

- Colour matching available
- Eco-friendly, solvent-free UV cured inks mean very rapid drying times
- Excellent ink adhesion to the substrate gives a durable, abrasion resistant surface
- The fire rating of the Harlequin floor is unaffected Harlequin Clarity fire rating Cfl-s1 (EN 13501-1)



Harlequin wood performance surfaces

Harlequin offer an extensive range of wood performance surfaces designed to be used with our sprung floors.

The Harlequin engineered wood performance surface is available in beech, maple and oak.

A solid wood range is also available. Please contact our technical team for full details.



Bespoke printed Harlequin Cascade | TV Production



Bespoke printed Harlequin Clarity over Harlequin Hi-Shine | Australian Ballet



Harlequin Activity with oak surface
Shakespeare's Globe

Harlequin's range of sprung floors

Sprung floors are commonly used in permanent installations, although Harlequin has developed a portable panel system that is also suitable for touring companies as a temporary sprung floor solution.

The Harlequin range of sprung floors have been developed for use in combination with a Harlequin performance surface.

Surface options include:

- A Harlequin vinyl performance floor
- Solid hardwood in beech, oak or maple
- Engineered board with a hardwood wear layer in beech, oak or maple

If a Harlequin vinyl performance floor is chosen, a colour matched composite edging profile can be installed around the finished edges.

If solid hardwood or engineered board is chosen, the skirting will be optional.

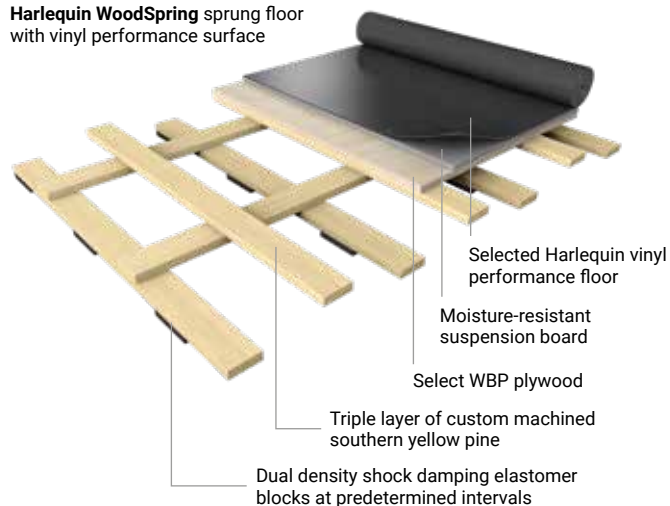


Harlequin WoodSpring™

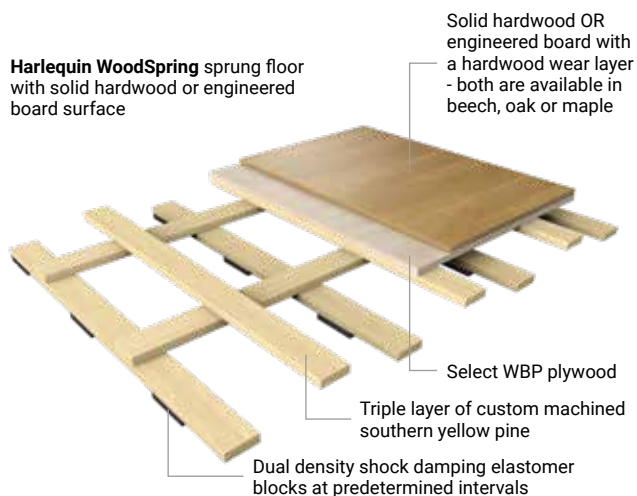
Harlequin WoodSpring comprises a layer of select WBP (weather and boil proof) plywood, a triple-layer of custom machined southern yellow pine laid at right angles, with shock absorption and energy return enhanced by dual density elastomer blocks attached at pre-determined intervals to the underside.

- Permanently installed sprung floor
- Modern update of the traditional basket weave construction
- 'Industry standard' choice for permanent installation by Harlequin Contracts Division
- Minimum floor thickness 91mm (before inclusion of chosen finish)
- Guaranteed for 25 years (T&Cs apply)

Harlequin WoodSpring sprung floor with vinyl performance surface



Harlequin WoodSpring sprung floor with solid hardwood or engineered board surface

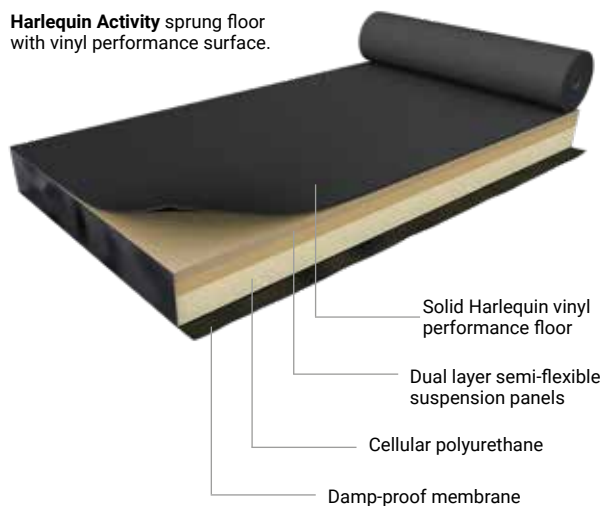


Harlequin Activity™

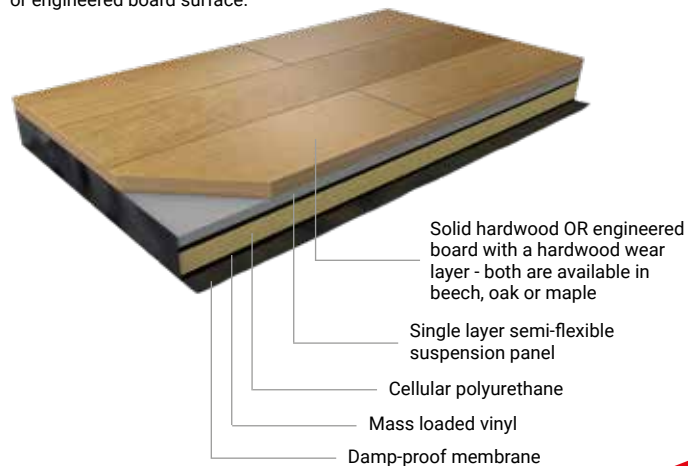
Harlequin Activity provides shock-dampening to avoid a 'trampoline' effect plus area elasticity to offer identical characteristics across the whole floor. It is an 'industry standard' choice with many hundreds of installations worldwide, effectively reducing injuries to both teachers and performers.

- Permanently installed sprung floor
- Harlequin 'triple sandwich' proprietary construction method
- A fully-floating system without fixings to the sub-floor
- Can be laid on any smooth and flat surface without prior preparation
- 'Industry standard' choice for permanent installation by Harlequin Contracts Division
- Minimum floor thickness 46mm (before inclusion of chosen finish)
- Guaranteed for 25 years (T&Cs apply)

Harlequin Activity sprung floor with vinyl performance surface.



Harlequin Activity sprung floor with solid hardwood or engineered board surface.



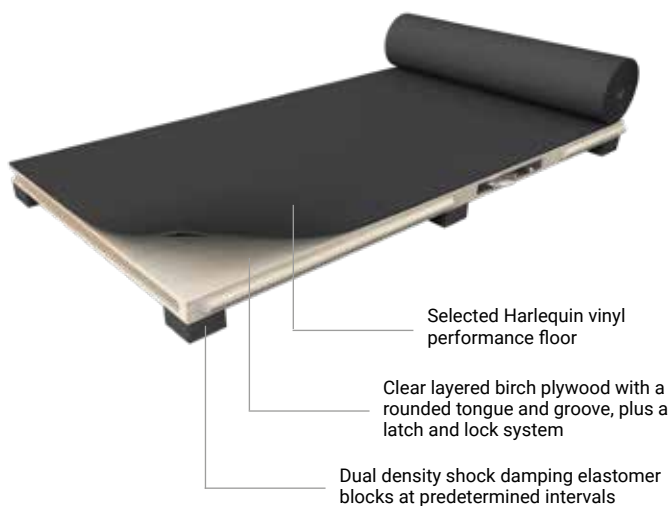
Harlequin Liberty™

Harlequin Liberty panels are fully supported by dual density shock dampening elastomer pads spaced at regular intervals, giving uniform and consistent shock dampening and providing the same “feel” and energy return to one or several dancers on the same panel, and with no hard spots at the joints.

- Portable or permanent sprung floor
- Modular sprung floor panel system
- Panels are laid in a brickwork fashion onto the sub-floor so that cross-joins do not coincide
- Panels join together by a rounded tongue and groove secured in place using Harlequin's proprietary 'one turn of the key' latch and lock mechanism
- Panel sizes 2m x 1m and 1m x 1m
- Minimum floor thickness 37mm (before inclusion of chosen finish)
- Guaranteed for 25 years (T&Cs apply)

It is finished by choosing an appropriate Harlequin vinyl performance floor with accompanying ramps and edge trims where required. For permanent and semi-permanent use, installation can be carried out either by the customer or by Harlequin's technical installation team.

Harlequin Liberty sprung floor panels and the accompanying portable Harlequin vinyl performance floor can also be stored in carts, providing an easy and safe way for stage crew to move them on tour or around a venue.



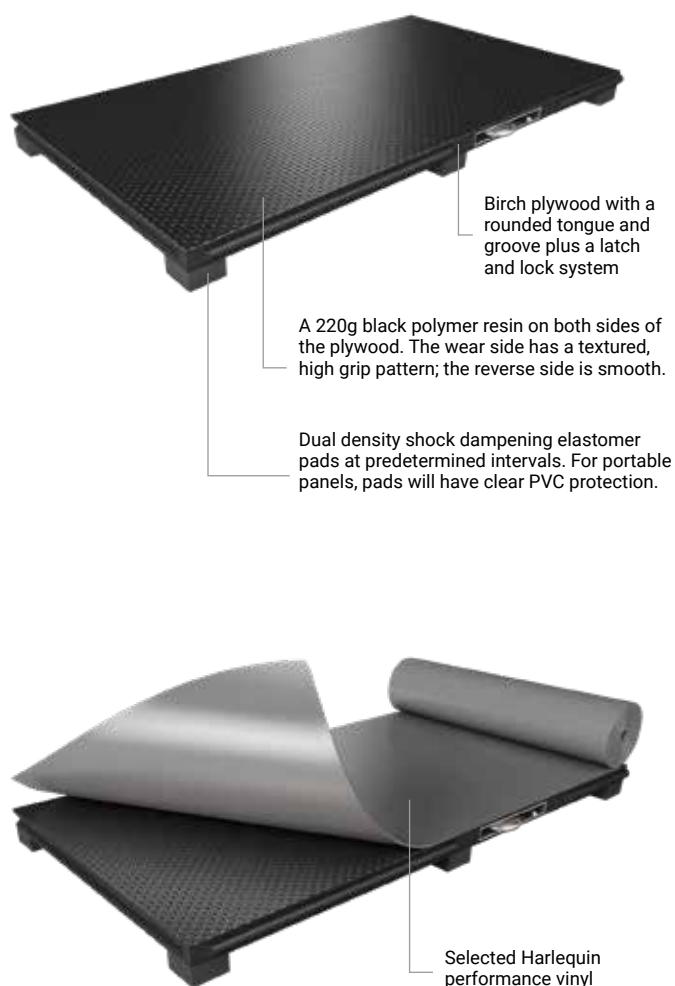
Harlequin latch and lock system

Harlequin Liberty HD™

Harlequin Liberty HD is a further development of our renowned Liberty panel system, designed with enhanced durability in mind for more challenging environments. Installed permanently or as a portable floor, panels are laid in a brickwork fashion onto the sub-floor so that cross joins do not coincide. The panels join together by a rounded tongue and groove and are secured using our 'one turn of the key' latch and lock mechanism.

Harlequin Liberty HD panels are coated with a black polymer resin on both sides and have a textured, high grip pattern on the top surface, which is wear resistant, anti-slip and weatherproof.

For permanent and semi-permanent use, installation can be carried out either by the customer themselves or by our highly-skilled technical team.

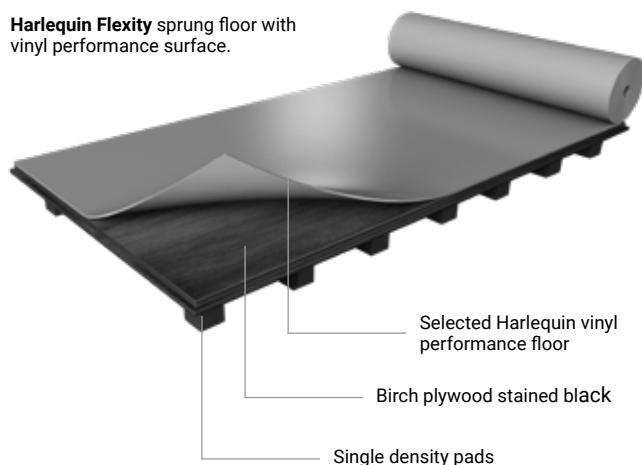


Harlequin Flexity™

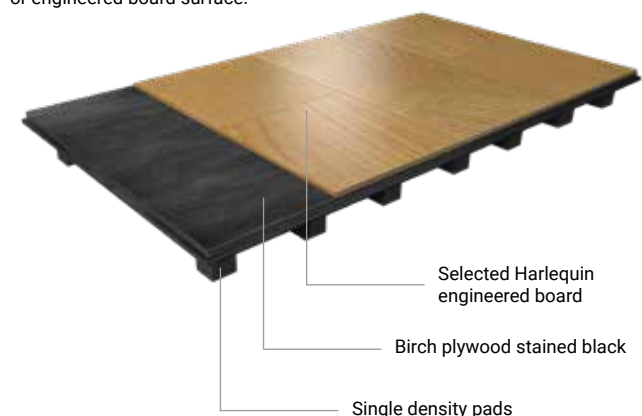
Harlequin Flexity is a panel based sprung floor system suitable for self-install in home dance studios with moderate DIY skills.

- Permanent or semi-permanent sprung floor
- Panels are laid in a brickwork fashion onto the sub-floor so that cross joins do not coincide
- Panels join together using a special tongue and groove, glued or screwed together
- 'Industry standard' choice for permanent or semi-permanent self-installation
- Panel size 1.125 m x 2.250 m - Dance surface size 1.089m x 2.214m
- Minimum floor thickness 37mm (before inclusion of chosen finish)
- Guaranteed for 15 years (T&Cs apply)

Harlequin Flexity sprung floor with vinyl performance surface.



Harlequin Flexity sprung floor with solid hardwood or engineered board surface.



Harlequin Flexity
The Big Act

**British Harlequin plc**

Festival House Chapman Way Tunbridge Wells Kent TN2 3EF

Freephone: 0800 28 99 32

Tel: +44 (0)1892 514888

Fax: +44 (0)1892 514222

Email: enquiries@harlequinfloors.com

Harlequin Europe SA

29 rue Notre-Dame L-2240 Luxembourg

Tel: +352 46 44 22

Fax: +352 46 44 40

Email: info@harlequinfloors.com

Harlequin Deutschland GmbH

Melanchthonstraße 16 D-10557 Berlin Germany

Tel: +49 (0) 30 340 441 600

Fax: +49 (0) 30 340 441 649

Email: anfrage@harlequinfloors.com

American Harlequin Corporation

1531 Glen Avenue Moorestown NJ 08057

Tel: +1 (856) 234 5505

Fax: +1 (856) 231 4403

Email: contact@harlequinfloors.com

Australian Harlequin Pty Ltd

Unit 1 47 Prime Drive Seven Hills NSW 2147 Australia

Tel: +61 (2) 9620 7770

Fax: +61 (2) 9620 7771

Email: auscontact@harlequinfloors.com

Harlequin Asia Limited

2/F The Strand 49 Bonham Strand Sheung Wan Hong Kong

Tel: +852 254 11 666

Fax: +852 254 11 999

Email: hksales@harlequinfloors.com

**If you would like further information, advice and samples
please contact us on +44 (0) 1892 514 888,
Freephone 0800 289 932 or enquiries@harlequinfloors.com**



HARLEQUIN
www.harlequinfloors.com